

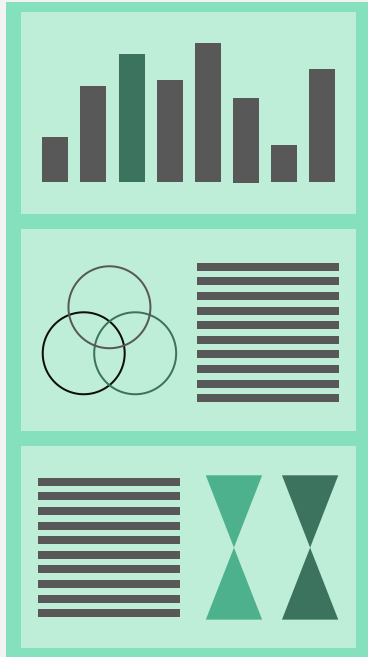
# IBOOLO OPTICS

## Dermatoscope

Premium Gear for Dermatology



# Table of contents



- 01** About us
- 02** Dermatoscope
- 03** Accessories
- 04** User Guide
- 05** Comparison
- 06** Our Certificate



# 01 About us



We are founded in 2012, is one of the world's leading supplier of smartphone lens. We started and focused on making high-end phone lens for many years ...



But now we do more than that, we want to use our extensive experience and knowledge to make some high quality and affordable dermascope to meet the needs of more people and arouse people's attention to skin problems.



# Our factory



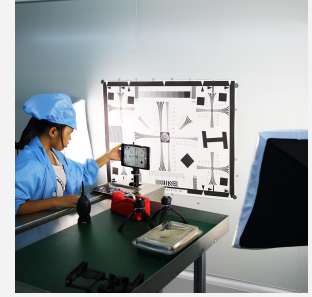
**glass cleaning**



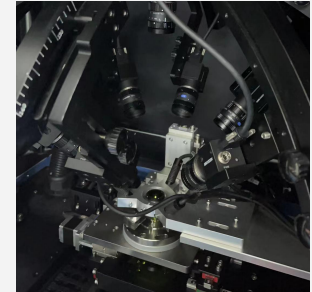
**inking**



**assembling**



**testing**



# 02 Dermatoscope

Dermatoscope

DE-4100  
dermatoscope

DE-3100  
dermatoscope

DE-400  
dermatoscope

DE-300  
dermatoscope

DE-200  
dermatoscope

DE-215 Woods  
Lamp

Adapter

Magnetic Ring  
for DE-4100

Magnetic Ring  
for DE-3100

Magnetic  
Adapter for  
Camera

Case for iPhone

Case for  
Samsung

Universal  
Phone Adapter

# DERMATOSCOPE DE-4100



# Technical Information

## DE-4100

"For dermatologists who demand to diagnose skin lesions by eyes, but also want a lightweight device they can take anywhere and use for taking high-quality skin photos."



## Features



**33mm**  
Lens Diameter



**10X**  
Magnification



**1000mAh**  
Battery



**4 elements 3 groups**  
Optical Design



**Aluminum & Glass**  
Material



**3-6 hours**  
Working Time



**6 LEDs Nonpolarized, 4 LEDs amber polarized, 12 LEDs white polarized.**  
Brightness Control.

# Naked Eye



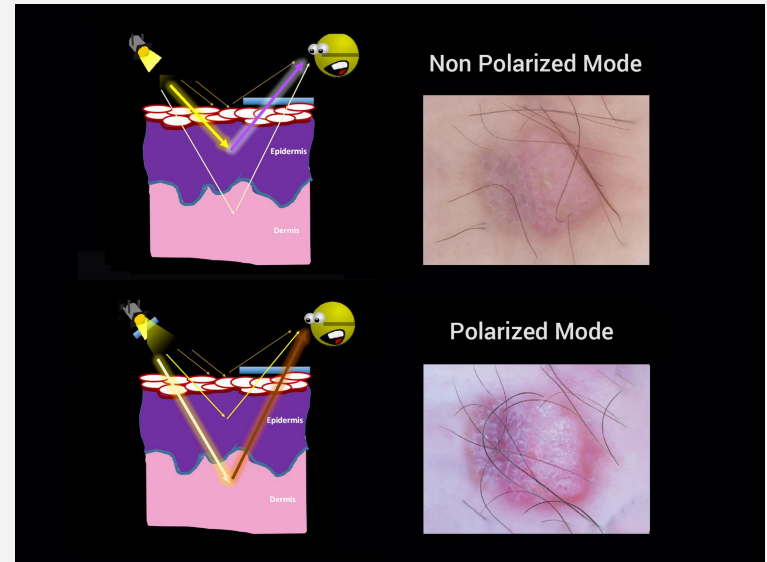
Dermatoscopes are handy tools for spotting skin cancer, but they also help check out common skin issues like atopic eczema, psoriasis, rosacea, Grover's disease or lichen ruber planus in daily practice.





# See Deeper

The polarized light can help to eliminate surface reflection and allow visualization of vascular structures. The instrument allows for visualization for deeper skin structures, such as blood vessels, collagen, and pigment in the dermis.



# Sharp & Precise



Made from premium multi-coated and multi-element optics, the imaging performance is the best in the market.



# Easy to Install & Use



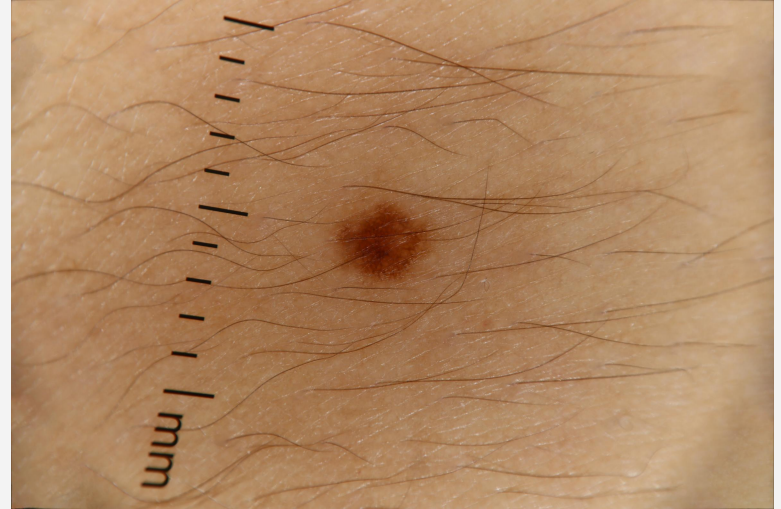
With magnet snap on and off, the dermatoscope can be installed on any smartphone in 5 seconds.



# A Picture Speaks a Thousand Words



Polarized



Non Polarized

# DERMATOSCOPE DE-3100



# Technical Information

DE-3100

"With its specialized light system, it allows for clearer, more precise, and detailed examination of the colors, shapes, and textures of skin lesions."



## Features



**32mm**  
Lens Diameter



**10X**  
Magnification



**1000mAh**  
Battery



**4 elements 3 groups**  
Optical Design



**Aluminum & Glass**  
Material



**3-6 hours**  
Working Time



**6 LEDs Nonpolarized, 6 LEDs amber polarized,  
18 LEDs white polarized**



# Efficient Lighting



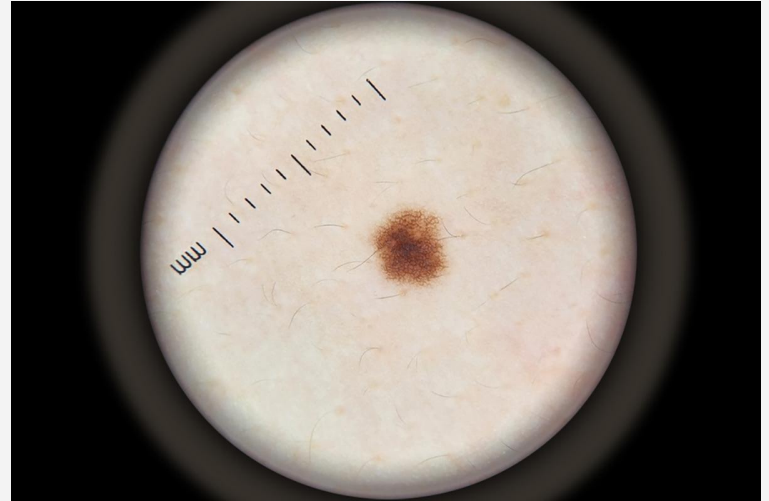
Built with polarized & non-polarized light, the DE-3100 offers two levels of color spectrum control to enhance imaging of deeper pigmentation.



# Sharp & Precise



Made from premium multi-coated and multi-element optics, the imaging performance is the best in the market.





# Easy to Install & Use



With magnet snap on and off, the dermatoscope can be installed on any smartphone in 5 seconds.



# DERMATOSCOPE DE-400



\*Phone Cover Not Included



# Technical Information

DE-400



"The universal lens mount gives the ability to attach dermoscopy on any smartphone or tablet and take pictures, so the lesions can be captured and scrutinized."

## Features



**45mm**  
Lens Diameter



**10X**  
Magnification



**200mAh**  
Battery



**4 elements 4 groups**  
Optical Design



**Aluminum & Glass**  
Material



**1-2 hours**  
Working Time



**5 LEDs Non polarized, 10 LEDs white polarized**



# DERMATOSCOPE DE-300



\* Phone Cover Not Included



# Technical Information

DE-300



“The universal lens mount gives the ability to attach dermoscopy on any smartphone or tablet and take pictures, so the lesions can be captured and scrutinized.”

## Features



**30mm**  
Lens Diameter



**6X**  
Magnification



**200mAh**  
Battery



**2 elements 2 groups**  
Optical Design



**Aluminum & Glass**  
Material



**1-2 hours**  
Working Time



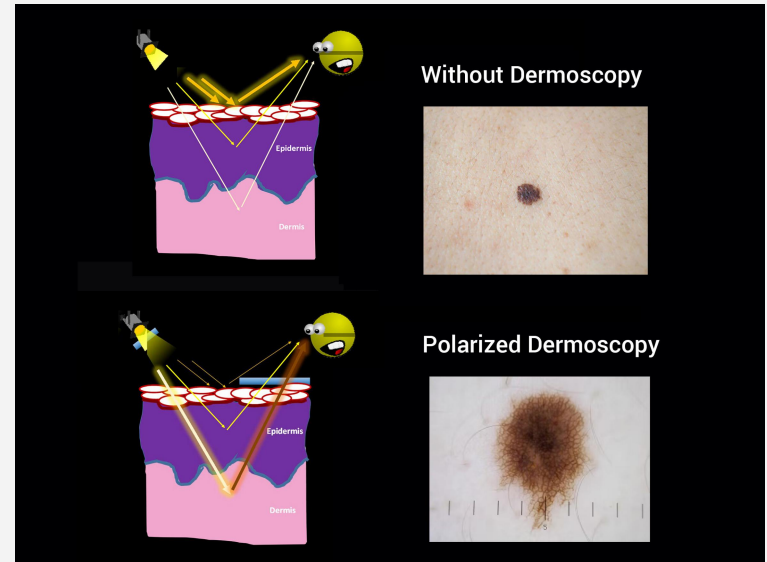
**2 LEDs Non polarized, 4 LEDs white polarized**



# Polarized Dermoscope



The polarized light can help to eliminate surface reflection and allow visualization of vascular structures. The instrument allows for visualization for deeper skin structures, such as blood vessels, collagen, and pigment in the dermis.





# Woods Lamp

## DE-215



# Technical Information

DE-215



“The universal lens mount gives the ability to attach dermoscopy on any smartphone or tablet and take pictures, so the lesions can be captured and scrutinized.”

## Features



**50mm**  
Lens Diameter



**4.5X**  
Magnification



**2000mAh**  
Battery



**1 element 1 group**  
Optical Design



**Plastic & Glass**  
Material



**2-6 hours**  
Working Time



**365nm**  
Ultraviolet Wavelength

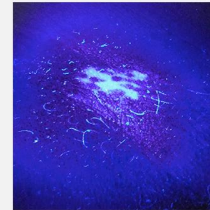




# High Performance



Woods lamps use ultraviolet light to reveal skin abnormalities that can't be seen with human eyes. Build with 60mm field view and no cross-infection design, this Woods lamp can be held about 10-30 cm away from the skin for detection. The examination is painless and safe..



UV Light



White Light

# 03 Accessories



A small contact plate can be used to detect difficult access pigmented lesions, such as nails and narrow areas. You can also choose a spare front contact plate for your dermatoscope.





### **UNIVERSAL PHONE ADAPTER**

Save images of lesions on your smartphone



### **SMALL CONTACT PLATE**

To detect difficulty access pigmented lesions



### **CAMERA ADDAPTER**

Save images of lesions on your camera

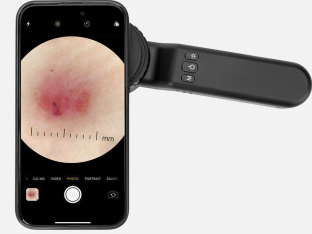




\*Magnetic Ring Not Included

## PHONE COVER ADAPTER

iPhone & Samsung phone cover for dermascope



## BACK UP BATTERY

1000mAh Lithium ion battery for replacement



## IN THE BOX

Relative accessories included in the package





# 04 User Guide

DE-4100/DE-3100



## On/Off

Press on/off button to turn on the instrument, press one second again to turn off the instrument.

The instrument will automatically turn off if there's no operation in 3 minutes.



## Polarized/Non Polarized

The device starts with white polarized mode. Polarized light indicator turns on. Press one second again, it switches to non polarized mode. Non polarized light indicator turns on.



## Adjust Focus

Rotating the focus ring until you see the image is clear.





# Smartphone Connector



- (1) Place phone adapter screw in the center of smartphone's main camera.
- (2) Screw magnet attachment on phone adapter.
- (3) Put dermatoscope's back ring and magnet attachment together.



# 05 Comparison



There's an influx of dermatoscope on the market. Our devices are remarkable blend of pro-level features and affordable price. Their premium optics and efficient LED system delivers sharp & precise images..





## **DE-300**

### **For Beginners**

- 6X magnification
- Polarized & Non Polarized
- 32mm image diameter
- Phone camera detection
- 200mAh Battery



## **DE-400**

### **For Enhanced**

- 10X magnification
- Polarized & Non Polarized
- 45mm image diameter
- Phone camera detection
- 200mAh Battery



## **DE-3100**

### **For Pros**

- 10X magnification
- Polarized & Non Polarized
- 32mm image diameter
- Focus adjustable
- Phone camera detection
- 1000mAh Battery



## **DE-4100**

### **For Pros**

- 10X magnification
- Polarized & Non Polarized
- 32mm image diameter
- Focus adjustable
- Phone camera detection
- Naked eye detection



# 06 Certificate

**EU DECLARATION OF CONFORMITY**  
According to Art. 18 of Regulation (EU) 2017/745 on Medical Devices

**Manufacturer:** Shenzhen Iboolo Optics Co., Ltd.  
B1406 Mingyou Purchasing Center, Xixiang St.,  
Bao'an District, Shenzhen, Guangdong, 518102 China

**SRN:** CN-MF-000029373

**European Representative:** Kingsmead Service B.V.  
Zonneshof 36, 2632 BE, Nootdorp, Netherlands  
office@kingsmead-service.com  
SRN: NL-AR-000002068

**Product name:** Dermatoscope

**Intended Purpose:** The device is an internally powered medical microscope for skin lesions diagnosis. It can be used for both contact and non-contact skin examination with its particularly lighting system. The accessory phone adapter helps connect dermatoscope with smartphone to capture and display images.

**Product code / Catalogue number:** DE-200 DE-300 DE-400 DE-5100 DE-4100 DE-5100 DE-6100  
692329WDE-3100SC

**Basic UDI-DI:** Class I, Rule 1

**Classification acc. to MDR Annex VIII:** Class I, Rule 1

**Product Options/Accessories:** N/A

**Conformity assessment procedure:** Annex II + Annex III of MDR

We, the manufacturer, herewith declare under our sole responsibility that the above-mentioned products meet the provisions of the Regulation (EU) 2017/745 on Medical Devices (MDR). All supporting documentations are retained under the premises of the manufacturer.

Signature: Shenzhen Iboolo Optics Co., Ltd.  
Name: Lily Wang  
Title: Director  
City: Shenzhen  
Date: 21/8/2022

**CE**

**Letter of Designation**  
for EU Representative

**Kingsmead Service B.V.**  
Confirmed that Kingsmead Service B.V. is the European Authorized Representative of

**Shenzhen Iboolo Optics Co., Ltd.**  
B1406 Mingyou Purchasing Center Building, Xixiang St., Bao'an District, Shenzhen 518102, Guangdong China

And the product(s) below have been registered with Farmatec of Netherlands.

Product name	Registration number
Dermatoscope	NL-CA02-2023-766116

This appointment remains valid until the expiration agreement of EC REP, manufacturing conditions, the quality system or relevant legislation are changed.

The product liability rests with the manufacturer in accordance with applicable Directive(s)/Regulation(s) and standard(s). Where the manufacturer affixes the CE marking to the product listed, they must ensure that all the requirements of the appropriate EU Directive(s)/Regulation(s) and standard(s) have and continue to be met.

Please inform us of any changes to:

- the company information
- additional generic groups of devices or additional devices
- discontinuation of a generic group of devices or devices

For use on behalf of  
**Kingsmead Service B.V.**  
Zonneshof 36, 2632 BE, Nootdorp, Netherlands

Authorized Signature  
Only used for the EU Representative Signature

Our Reference: ERU02244  
Issued date: July 14, 2023  
Page 1 of 1

**EC REP** Kingsmead Service B.V.  
Zonneshof 36, 2632 BE, Nootdorp, Netherlands

**EUAMED**

UDI-DI 06923299016887

**Manufacturer information**

Organization name: Shenzhen Iboolo Optics Co., Ltd.  
Address: B1406 Mingyou Purchasing Center, Xixiang St., Bao'an District, Shenzhen, Guangdong  
Telephone number: +86 (0)755 84 657 100  
Email: ibooloo@ibooloo.com

**Authorized Representative**

Organization name: Kingsmead Service B.V.  
Address: 36 Zonneshof Nootdorp  
Telephone number: +31 (0) 20 692 329  
Email: office@kingsmead-service.com

**Basic UDI-DI details**

Version 1 (current) | Last update date: 2023-03-20

**Basic UDI-DI identification**

Applicable regulation: MDR REGULATION (EU) 2017/745 on medical devices

Basic UDI-DI code: 692329WDE-3100SC  
Issuing entity: 001

Is it a System or Procedure Pack which is a Device in itself?  
No

Special device type: No

Risk class: Class I

Implantable: No

Measuring: No

Function: No

Reusable surgical instrument: No

Active device: Yes

Device intended to administer: No



# Thanks

Do you have any questions?

Lily@iboolo.com  
+86 15061112550  
iboolo.com

